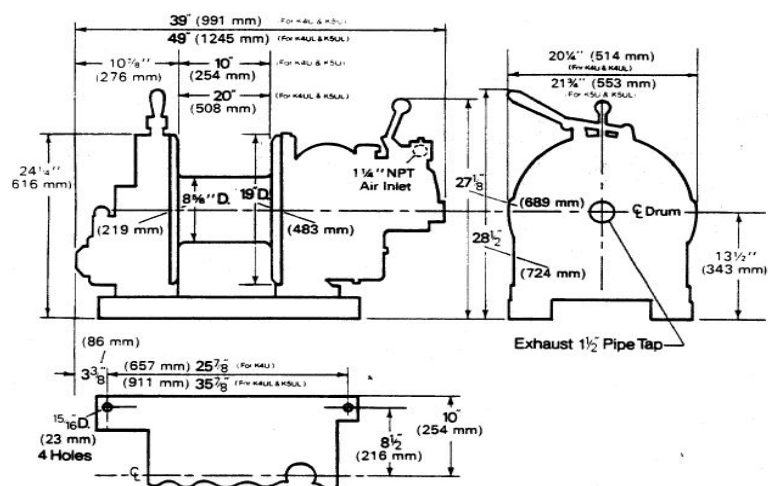


# K4UL Air Winch



K4UL Air Winch	
Rated capacity	ANSI Mid-layer 1814kg with 170m x Ø13mm on drum
Performance	Line speed on 5th layer at rated load = 38.0m/min Line speed on 5th layer at light load = 50.0m/min Line speed on top layer at light load = 70.0 m/min Stall on 1st layer = 4.0 tonne
Air consumption at rated line pull	11.5m <sup>3</sup> /min (400 cfm) at 6.2 bar (90 psi) via Ø1½" hose
Braking	Automatic failsafe aire operated band on drum
Net Weight	430kgs
Extras	Tensioning manifold can be provided





# K4UL Air Winch

K4UL	Core dia		219	flnge dp	132	Drum wd		508
Rope Ø mm	10	12	13	14	16	18	19	
Turns/Layer	48.8	40.7	37.6	34.9	30.5	27.1	25.7	
Layer	metre	metre	metre	metre	metre	metre	metre	metre
1	35	30	27	26	23	20	19	
2	73	62	58	54	48	43	42	
3	115	98	91	86	77	70	67	
4	159	137	128	121	109	99	95	
5	206	178	168	158	143	132	127	
6	257	223	210	199	181	167	161	
7	310	271	256	243	222	206	199	
8	367	322	305	290	266			
9	427	376	357					
10	490	434	412					
11	555	494						
12	624							
13	696							

## LINE PULL @ 6.2 BAR

