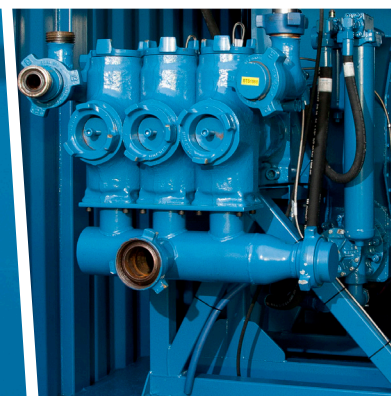
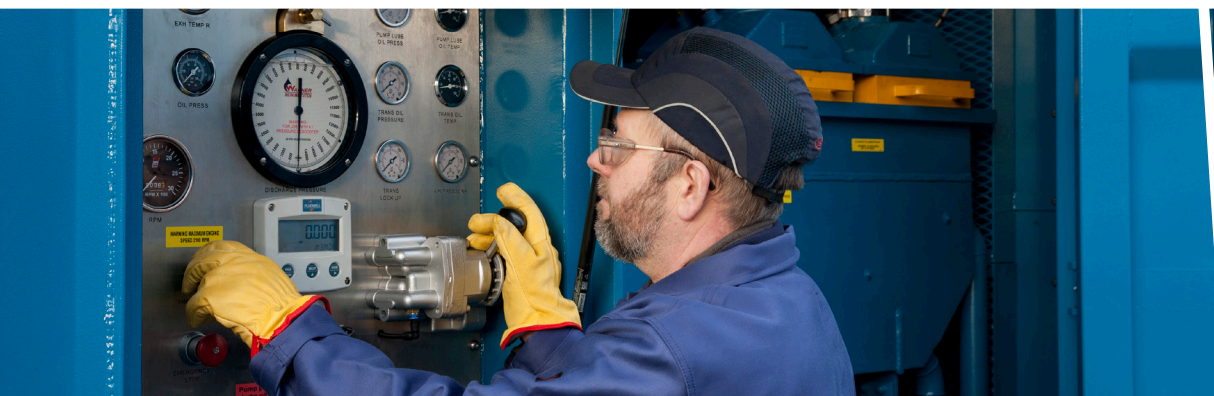




HT400 Water Pump WP32/WP43/WP47



Power Drive Specification	
Engine Type	Detroit diesel 12V 71
Fuel Type	Diesel
Hydraulic Horsepower	345
Engine Horsepower	450
Transmission	Allison 5 speed CLBT 5962
Ratios	4.00, 2.68, 2.01, 1.35, 1.00
Fuel Capacity	125 gallons
Starting System	Air start
Pump	
Pump Type	Triplex Halliburton HT400
Gear Ratio	8 .6 : 1
Plunger Type	4 1/2" Plungers
Max Pressure	10000 psi
Max Flow	10 BPM
Discharge Connections	2 x 3" 1502 & 2 x 2" 1502
Suction Connections	4" fig 206
Control Panel	Externally mounted c/w shutdown system. Rexroth 5 speed air operated transmission control with quick neutral button
Dimensions	
Length	6040 mm
Width	2430 mm
Height	2870 mm
Weight	14654 kg
Certification	
	OCMA MEC I ZONE II. Housed in a 20' shipping container certified to DNV 2.7-1



For more information on how Fisher Offshore can add value to your offshore operations visit www.fisheroffshore.com

or contact one of our specialist consultants at info@fisheroffshore.com or call +44 (0)1651 87 39 32

Fisher Offshore, North Meadows, Oldmeldrum, Aberdeenshire, Scotland AB51 0GQ

