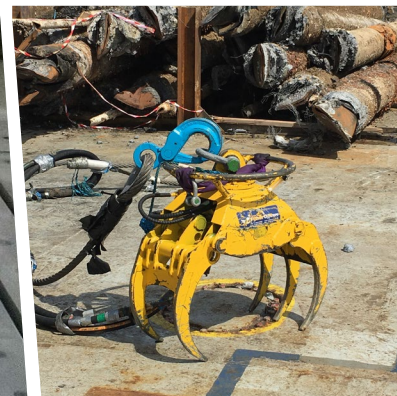
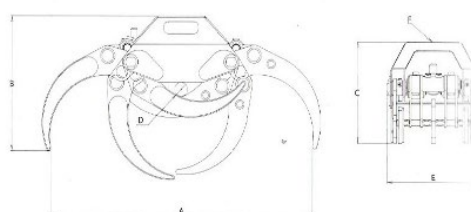




# 5 Tonne Grab



5 Tonne Grab	
Capacity	0.20m <sup>3</sup>
Number of Teeth	5
Tooth Force	11.6 kN
Pressure	200 bar
Oil Flow	50 ltr/min
Excavator, Weight	8 ton
Weight	140 Kg
Connections	Grab (open and close) BSP
Lifting Interface	Single 12ton shackle
Diver / ROV Interface	Fitted with all round handles and hydraulic brake safety feature



A	B	C	D	E	F
1225	585	440	60	432	173/6



TG 22 PRO SR5	140	0,20	200	50	11,6	5	8	3		
---------------	-----	------	-----	----	------	---	---	---	--	--



For more information on how Fisher Offshore can add value to your offshore operations visit [www.fisheroffshore.com](http://www.fisheroffshore.com) or contact one of our specialist consultants at [info@fisheroffshore.com](mailto:info@fisheroffshore.com) or call +44 (0) 1651 87 39 32  
 Fisher Offshore, North Meadows, Oldmeldrum, Aberdeenshire, Scotland AB51 0GQ

