



Umkhomo barge

Vessel identification

The Umkhomo is a pontoon constructed barge, designed primarily for dredging operations, using a DOP pump system. The barge is non self propelled.

Type of vessel	Dumb barge
Build date	2015
Hull type	Steel
Port of registry	Panama
Propulsion	None

Deck equipment

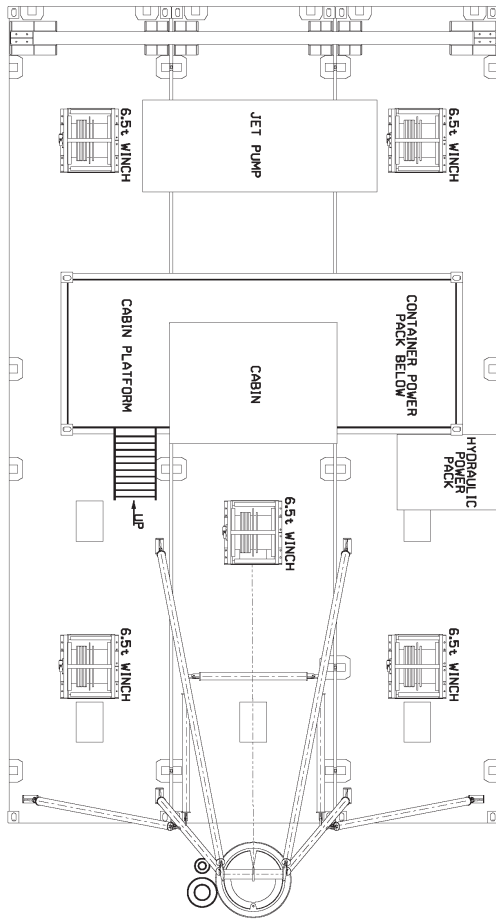
DOP pump power pack	Deutz V6 engine, hydraulic 266cc pump closed loop systems
Hoist and winch power pack	Cat C4.4 engine. hydraulic pump 100cc piston
Deck winches	4 x 6.5t CAT Motors (2 port and 2 stbd) 1 x 6.5t Doosan TM22 VC (Main hoist)
Gantry	8t SWL
Fairleads	x 4
Jet pump AFT side	C7
Jet pump port side	Hydraulic
Cabin	Operators cabin



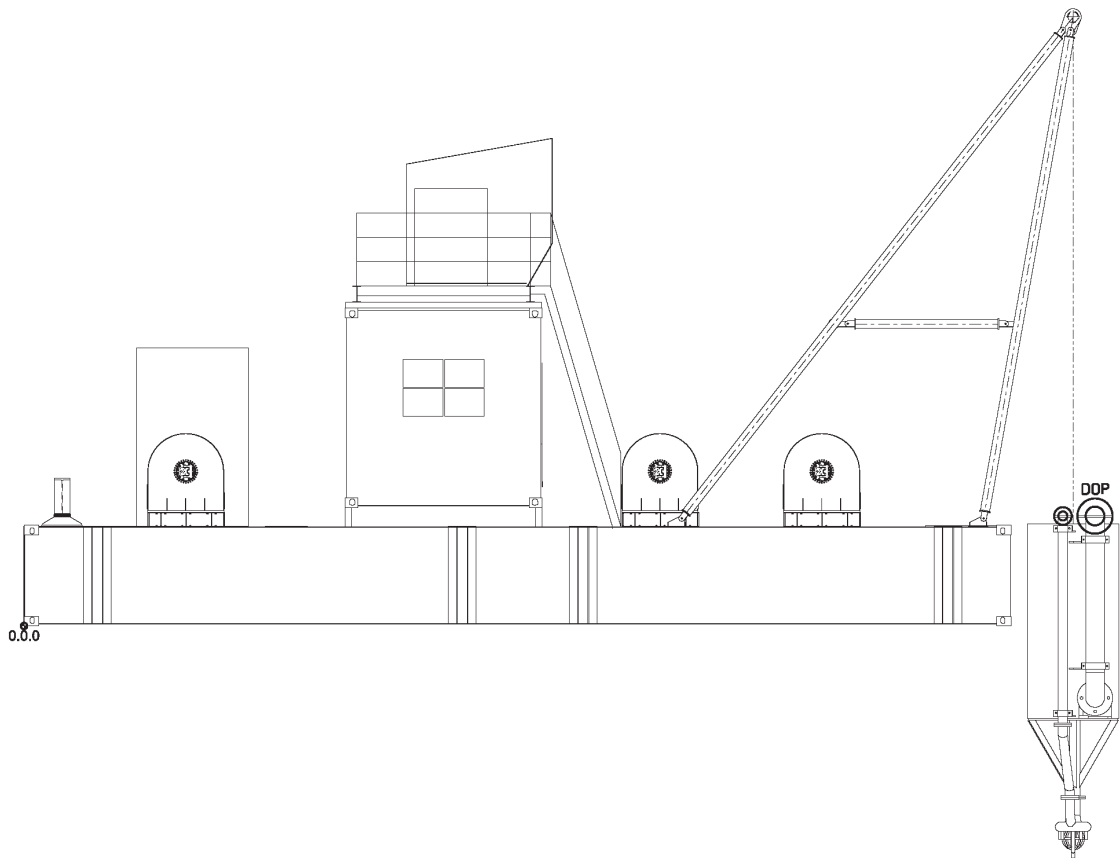
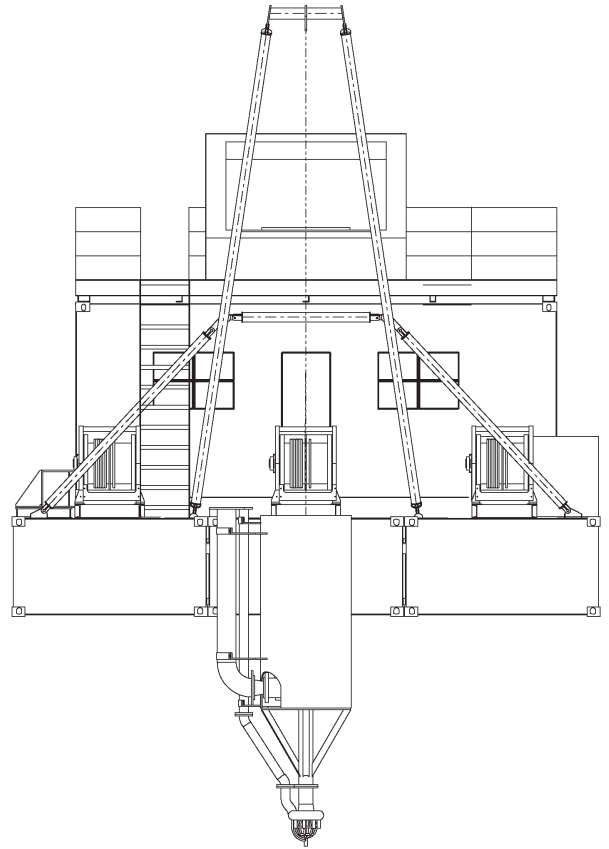
Dimensions and weight

Gross tonnage	31.63 tons
Net tonnage	28.47 tons
Overall length	11.64m
Breadth	7.29m
Draught	0.58m
Lightship displacement	49 tons
Depth at midship	1.2m

PLAN VIEW



SIDE VIEW



PROFILE VIEW