



# James Fisher Offshore

---

LIFE OF FIELD SERVICES

---







## Your trusted partner across the oil and gas life of field

With a deep understanding of marine, offshore and subsea operations in the oil and gas market, James Fisher Offshore (JFO) provide total engineering solutions, equipment and support for offshore and subsea operations across the oil and gas life of field.

We are competent in our technical approach and processes. Our expert services include EPCI, SURF, IRM and CFE project delivery, with a significant track record for subsea, topside and shore-pull infrastructure installation campaigns and full back deck service provision.

## Strong global presence

JFO is strategically positioned to deliver localised support in the UK, Malaysia, USA, Mexico, Nigeria and the Middle East.







## Drilling support services

JFO is a platinum-level distributor for Ingersoll Rand for material handling and power tool products in both the UK and Malaysia. With dedicated pneumatic workshops and fully trained OEM certified technicians in both locations, we have been 'Master Service Centre' accredited by Ingersoll Rand, ensuring quality delivery to our customers.

- New utility and man riding winches
- New hoists and BOP handling systems
- OEM spare parts
- Service, overhaul and repair
- Testing and re-certification

## Subsea construction services

JFO is a market leader in the provision of equipment and services to support subsea, topside and shore pull infrastructure installation campaigns. We have a proven track record in the delivery of subsea tiebacks, caisson lifts, umbilical and riser pull-ins.

- SURF and EPIC operations
- Shore approach pull-ins
- Full range of hydraulic winch lifting equipment and marine cranes
- Comprehensive range of back-deck and subsea equipment packages

## Inspection, repair and maintenance (IRM) services

JFO is an expert in full back deck service provision, supported by dedicated project delivery teams who understand the accelerated demands of the IRM market, with extensive experience in delivering multi-vessel and multi-campaign scopes of work. We have a proven track record in the reliable and timeous execution of survey, cutting, recovery and removal campaigns.

- Dredging and cutting
- HP jetting
- Coat removal and grit blast systems
- Pipeline inspection and repairs

## Controlled flow excavation (CFE) services

JFO is the world's most trusted, experienced and innovative controlled flow excavation (CFE) supplier. Our fleet of CFE equipment provides a non-contact form of excavation that eliminates the risks associated with other excavation methods, especially around complex subsea assets.

- |  |  |
|--|--|
| • Pipeline and cable trenching and backfilling | • Decommissioning and abandonment work |
| • Seabed preparation and clearance             | • Spud can clearance                   |
| • De-burial                                    | • Drill cuttings dispersal             |
| • Pre-sweeping preparation                     | • Harbour and channel clearance        |
| • Freespan rectification                       |  |
| • Rock dump dispersal and removal              |  |



## People

The JFO family is the heartbeat of our business. As a team we strive for safety, excellence and operational delivery beyond our customers' expectations at all times.

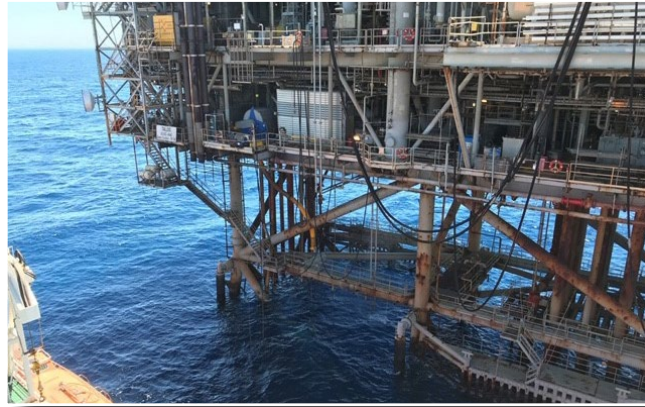
Our dedicated engineering and offshore teams understand the demand and challenges faced by our customers. We work with you to deliver against your specific requirements and provide complete support across the full life cycle of your offshore projects, enabling the work to be completed safely and efficiently.

- In-house engineering and expertise
- Highly-skilled and certified offshore supervisors, technicians and operators
- Multi-trained and experienced technicians providing valued integration to our customers existing crews





## Proven track record

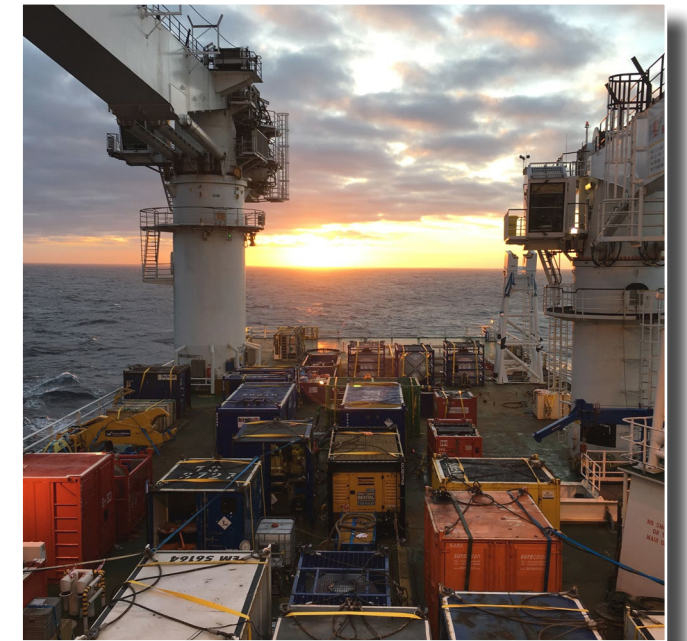


### Umbilical pull-in, GOM

- Engineering, fabrication and installation of equipment
- SCR pull-in and installation of the SCR porch and all clamps in order to secure the umbilical to the platform legs

### IRM full back deck package, UKCS

- Equipment spreads for 3 vessels over 225 operational days
- Diver tooling
- 1T telescopic crane
- Grit cleaning system
- HP waterjet cleaning system
- Diamond wire saw
- 800T hydraulic shear
- Mass flow excavation spread
- Deck winches



### Riser installation, UKCS

- 15Te and 20Te Winch package for platform and dive support vessel
- Suite of air hoists for cross-hauling the riser over the cellar deck on the platform
- JFO technicians for maintenance and operation of equipment



### Baobab, Ivory Coast

- Flexible product recovery
- 1950T hydraulic shear fitted with two port hot stab





### Pre sweeping and Trenching, Vietnam

- TR2000 and T8000 CFE equipment spread for trenching and backfilling of 2 pipelines
- Sand wave levelling along the route
- Total distance of 72km



### Cable repair, Taiwan

- TR2000 CFE equipment spread for deburial
- Trench and backfilling of cable following repair
- Water depths of 5m to 20m







---

**UK**

T: +44 (0) 1651 873932

E: [info@fisheroffshore.com](mailto:info@fisheroffshore.com)

**Malaysia**

T: +60 197 228 744

E: [jfoasia@fisheroffshore.com](mailto:jfoasia@fisheroffshore.com)

**Americas**

T: +1 713 466 1233

E: [jfoamericas@fisheroffshore.com](mailto:jfoamericas@fisheroffshore.com)

**Middle East**

T: +971 58 2198684

E: [jfomiddleeast@fisheroffshore.com](mailto:jfomiddleeast@fisheroffshore.com)

---

**[www.fisheroffshore.com](http://www.fisheroffshore.com)**

