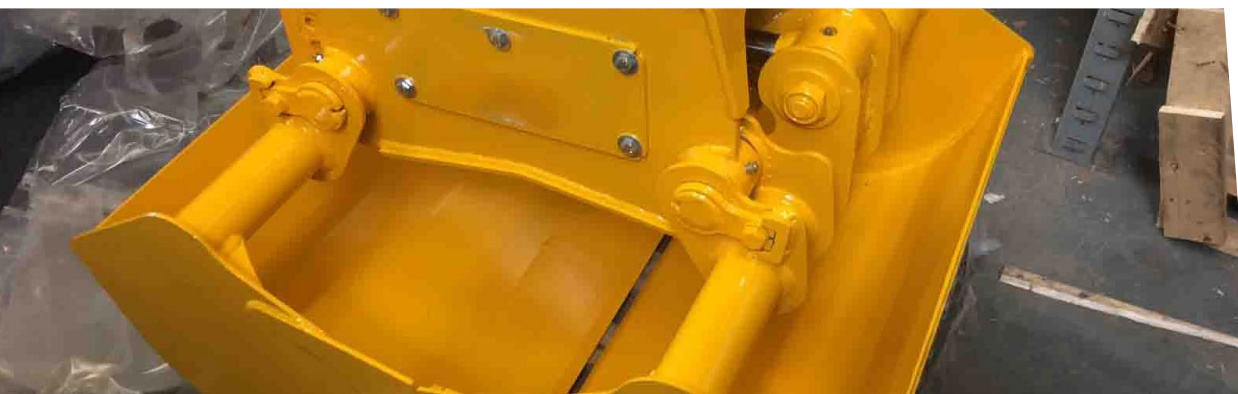
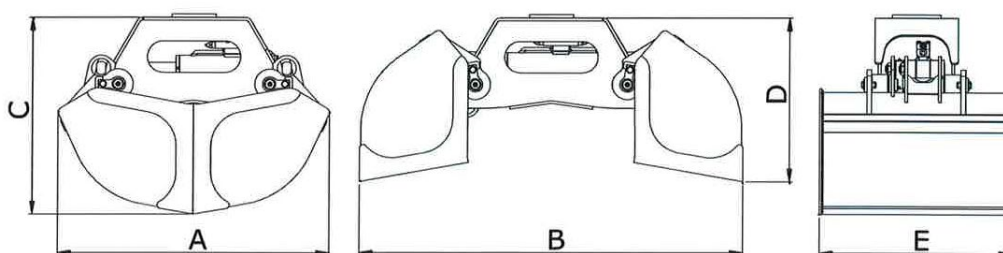




3 Tonne Clamshell Grab



3 Tonne Clamshell Grab	
Capacity	0.4m ³
Number of Shells	2
Pressure	Max 300 bar
Oil Flow	50 ltr/min
Empty Weight	500kg
Connections Grab (open and close)	BSP
Lifting Interface	Single Lifting shackle
Diver / ROV Interface	Fitted with all round handles and hydraulic brake safety feature



Dimensions (mm)				
A	B	C	D	E
1350	1750	900	720	930

