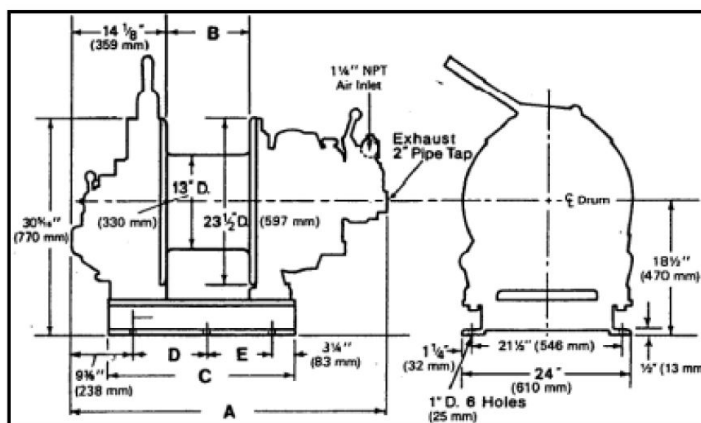




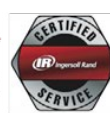
K6UL Air Winch



K6UL Air Winch	
Rated capacity	ANSI Mid-layer 4536kg with 160m x Ø19mm on drum
Performance	Line speed on 4th layer at rated load = 5.0m/min Line speed on 4th layer at light load = 12.5m/min Line speed on top layer at light load = 18.0m/min Stall on 1st layer = 6.9T
Air consumption at rated line pull	10.2m ³ /min (360 cfm) at 6.2 bar (90 psi) via Ø1½" hose
Braking	Automatic failsafe air operated band on drum
Net Weight	750kgs
Extras	Spooling gear/level-wind can be provided



A	B	C	D	E
58½"	1486mm	24"	610mm	38¾"
		987mm	16¾"	426mm
			15¾"	387mm



For more information on how Fisher Offshore can add value to your offshore operations visit www.fisheroffshore.com

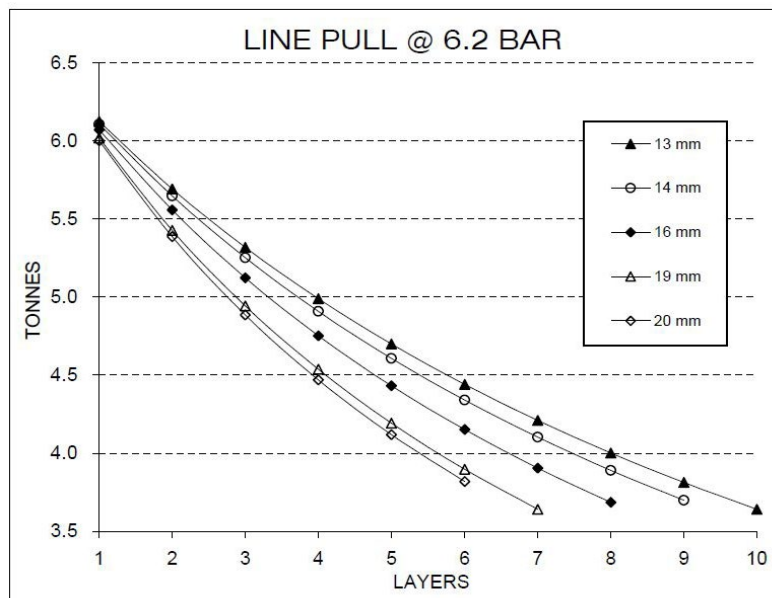
or contact one of our specialist consultants at info@fisheroffshore.com or call +44 (0) 1651 87 39 32

Fisher Offshore, North Meadows, Oldmeldrum, Aberdeenshire, Scotland AB51 0GQ



K6UL Air Winch

K6UL	Core dia 330		flnge dp 133		Drum wd 610		
Rope Ø mm	13	14	16	18	19	20	22
Turns/Layer	45.1	41.9	36.7	32.6	30.9	29.3	26.7
Layer	metre	metre	metre	metre	metre	metre	metre
1	49	45	40	36	34	32	29
2	101	94	83	75	71	68	63
3	157	147	131	118	113	108	100
4	217	208	182	165	158	151	140
5	280	263	236	215	206	198	184
6	347	327	294	269	258	249	232
7	418	394	356	327	314		
8	482	465	422				
9	570	540					
10	652						



For more information on how Fisher Offshore can add value to your offshore operations visit www.fisheroffshore.com

or contact one of our specialist consultants at info@fisheroffshore.com or call +44 (0) 1651 87 39 32

Fisher Offshore, North Meadows, Oldmeldrum, Aberdeenshire, Scotland AB51 0GQ