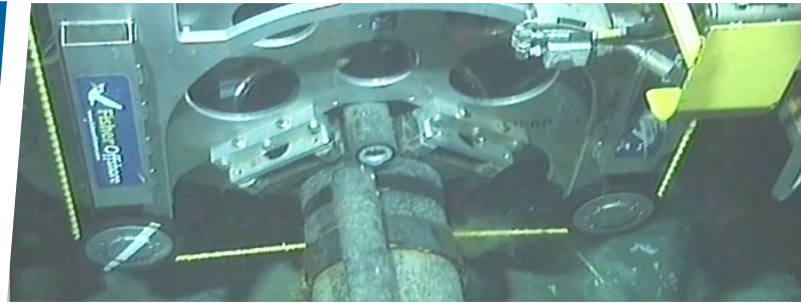




Diamond Wire Saw 16" - 38"



James Fisher Decommissioning hydraulic diamond wire saw (DWS) cutting equipment has been designed and manufactured to excel in safety, quality, durability and ease of use to ensure total customer satisfaction.

The DWS range has been specifically designed for 'subsea' pipe cutting operations of varying materials and thicknesses.

The saw uses a continuous loop, diamond cutting wire together with a hydraulic drive and feed system to advance the wire into the work piece.

The advantage of using a cutting wire instead of a blade is that a work piece made up of differing materials and thicknesses has little effect on cutting performance when compared to using a conventional bandsaw blade. The wire is also less likely to bind if the work piece bends or pinches the cutting wire.

This DWS range has been specifically designed for subsea cutting applications where wire cooling is not an issue however it can be used for non-subsea applications if an adequate coolant supply and additional machine support is available.

Diamond Wire Saw	DWS1638
Capacity	16" - 38" (406mm - 965mm)
Weight in air	550kg (without buoyancy)
Length	Open 2528mm / Closed 2291mm
Width	1940mm without buoyancy / 2732mm with buoyancy
Height	905mm
Pressure	190 bar
Flow Max	90 l/min
Weight in Water	30-50Kg (with buoyancy)

The DWS can be operated by a variety of methods: Deck controls, Diver controls or by ROV via hot stabs.

Optional extras include: Buoyancy modules, Hot stab set, Deck or Subsea control panel, Alternative wire types designed to suit the most difficult of materials and coatings.

T: +44 (0) 1651 873932

E: info@jfdecom.com

W: jamesfisherdecommissioning.com

