

CASE STUDY



Anglo-Suisse

Gulf of Mexico

202 mtr

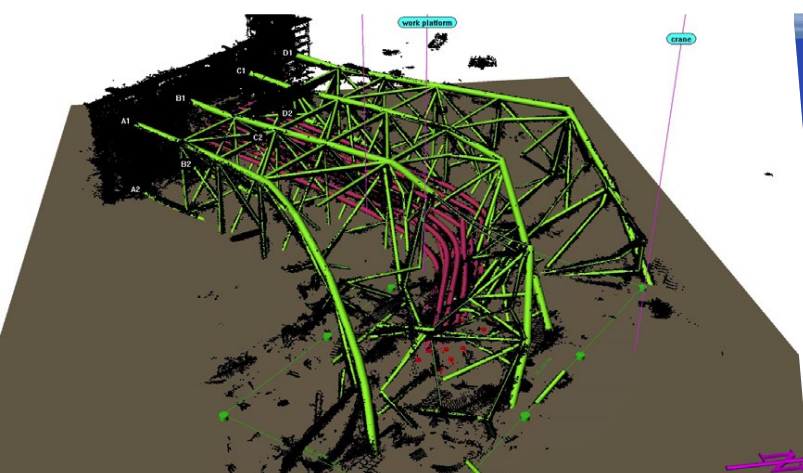


Figure A

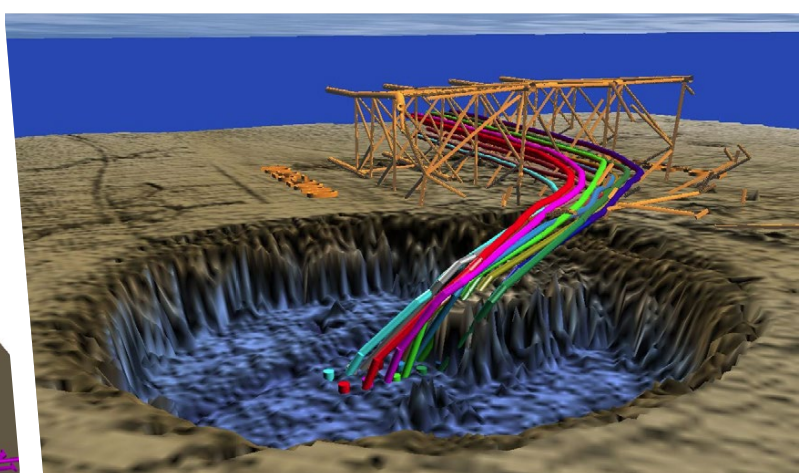


Figure B

Scope of Works

As part of the decommissioning process of an oil and gas platform in the Gulf of Mexico which had been knocked over by a hurricane, James Fisher Offshore's excavation expertise was called upon to excavate around 11 bent conductors.

The JFO T8000 spread was contracted to excavate an area around the conductor bay to give safe diver access to straight pipe on the conductors, allowing them to be cut and capped. The platform and 11 conductors were protruding above the mudline (Figure A - above left)

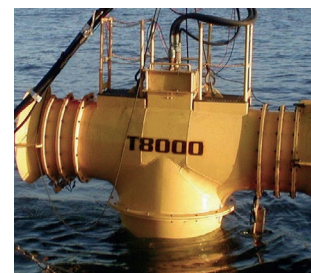
The structure and debris sitting above seabed around the conductors were removed prior to the mobilization of the T8000 spread and personnel onboard the vessel.

As the excavation operations progressed, more debris was uncovered and the project continued in a joint excavation/cutting process.

Scope of Supply

1 x T8000 Excavation Tool

The T8000 generates a column of water which travels vertically down to the seabed at a velocity of up to 10mtr per second.



The final excavation (Figure B - above right) was 44' deep and at seabed level was 230' diameter. Total excavation time for the T8000 was 277 hours. Total running time for the equipment including deployment, recovery, positioning and survey was 372 hours.



T: +44 (0) 1651 873 932
E: info@fisheroffshore.com
W: www.fisheroffshore.com

A part of
James Fisher and Sons plc
Marine Services Worldwide

