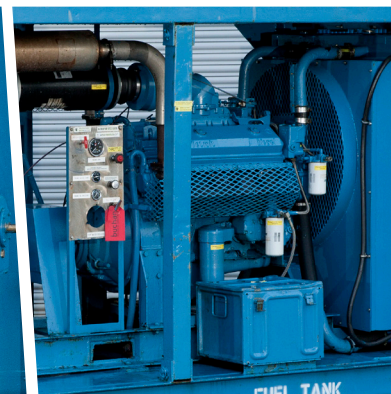


# Centrifugal Pump

## WP11 - Single Stage



Power Drive Specification	
Engine Type	Detroit 8VA 71.N
Fuel Type	Diesel
Max RPM	2300
Engine Horsepower	240 @ 1800 RPM
Clutch Type	Anderton overcentre twin plate
Fuel Capacity	140 imp gal
Starting System	Air start

Pump	
Pump Type	Ingersol dresser single stage in stainless steel
Duty	5m <sup>3</sup> /min @ 10 bar
Max Pressure	10 bar
Max Flow	5m <sup>3</sup> /min
Suction Connections	8" # 300 RF
Discharge Connections	6" # 300 RF
Suction Required	Free flooding
Controls	Externally mounted c/w all controls and gauges
Shut Down System	Air Operated - stop, emergency stop, overspeed, high water temp, low oil pressure

Dimensions	
Length	3505 mm
Width	1730 mm
Height	2310 mm
Weight	6000 kg

