



Inyathi deck barge

Vessel identification

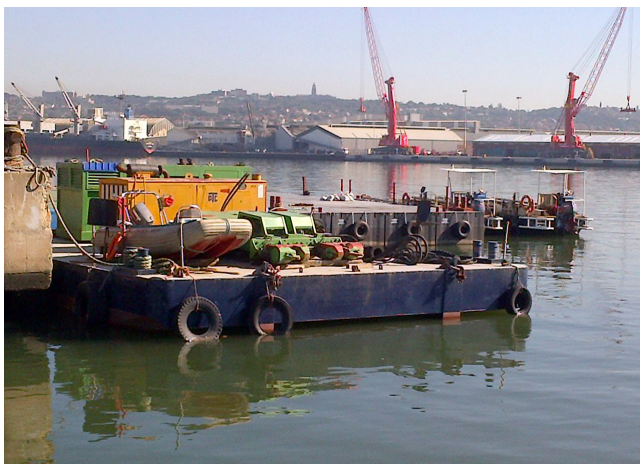
The Inyathi deck barge can be configured either as a versatile flat top work platform or, with the addition of derricks, as a specialist liftbarge for handling beams of up to 70 tons.

The Inyathi was used as the lift vessel for the placement of the concrete beams during the Richard's Bay Berth 208 construction. Inyathi has been retrofitted with a moonpool which adds geotechnical capabilities to this barge.

Type of vessel	Deck barge
Build date	2008
Port of registry	Durban
Official No.	20902
Category	IXA
Propulsion method	None

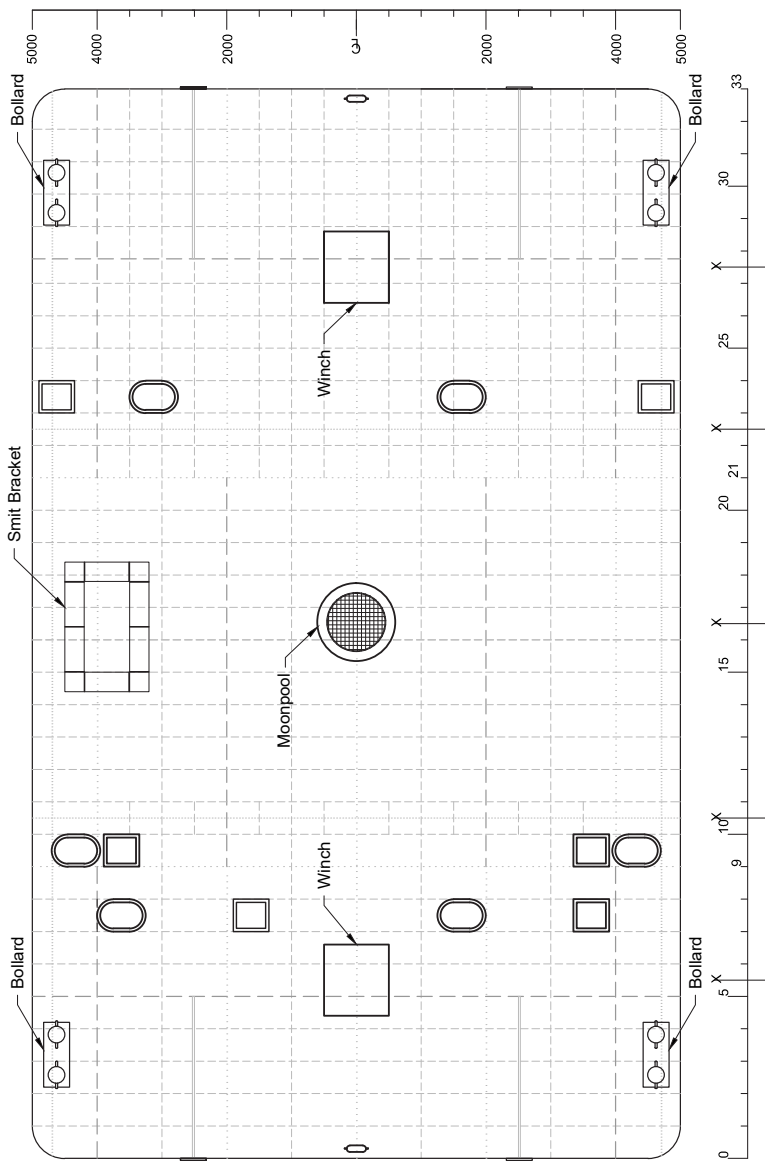
Dimensions and weight

Gross tonnage	67.7 tons
Net tonnage	63.3 tons
Overall length	16.5m
Breadth	10m
Depth	2m
Draught	0.65m

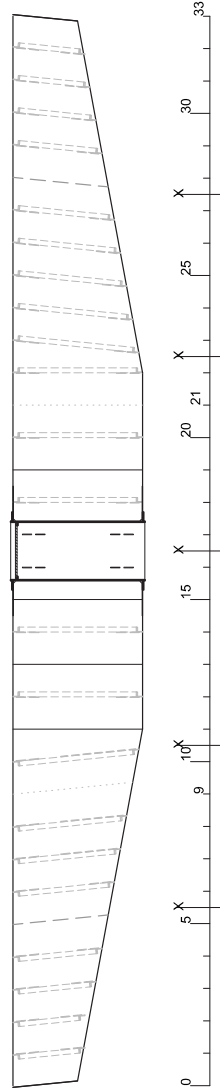




Copyright: This document is the property of Subtech and shall not be copied or used wholly or in part without prior written consent of the company.



PLAN ON DECK
Scale 1 : 15



SECTION CENTER LINE
Scale 1 : 15

Rev.	Date	Prepared by	Checked by	Approved by	Embrised by	Description	Status



Engineer	Riaan Venter
Drawn	02/03/2022
Date	1 : 75
Scale	A3

Sheet 1 of 1

INYATHI
BARGE
LAYOUT

PLANT - 000 - TWD - 000 - A1
Revision