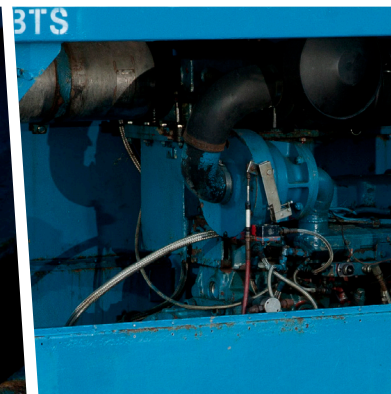


Centrifugal Pump

WP40



Power Drive Specification	
Engine Type	Zone II Ford 2725
Fuel Type	Diesel
Max RPM	2000
Engine Horsepower	100
Clutch Type	Direct drive
Fuel Capacity	40 imp gal
Starting System	Air start
Pump	
Pump Type	4" x 3" x 13" single stage
Duty	N/A
Max Pressure	8.5 bar
Max Flow	2.5m³/min
Suction Connections	4" 150 / 4" Weco
Discharge Connections	3" 150 / 4" Weco
Suction Required	Free flooding
Controls	Externally mounted c/w all controls and gauges
Shut Down System	Oil operated - stop, emergency stop, overspeed, high water temp, high exhaust temp, low oil pressure, fuel shut off.
Dimensions	
Length	2700 mm
Width	1310 mm
Height	1680 mm
Weight	2500kg
Certification	
	OCMA MEC I ZONE II; SI 1998 No 2307. BS7072

