



Ceto workboat

Vessel identification

The Ceto is a steel hull built stable platform with a powerful engine. It can be utilised as a general workboat, support to harbour based diving, marine construction and barge handling projects.

Type of vessel	General workboat
Build date	1991
Hull type	Steel
Port of registry	Durban
Official no.	20724 / DTD824D
Category	D
Engine	Deutz SBA8M816 650hp
Bollard pull	Approx 3 tons
Estimated speed	7 knots
No. of crew	6 including skipper

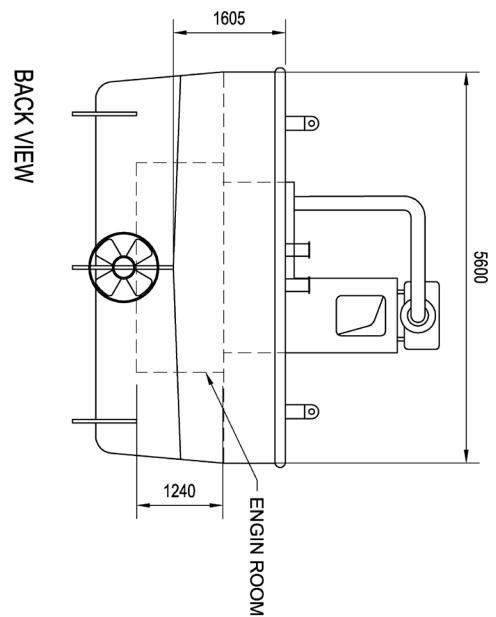
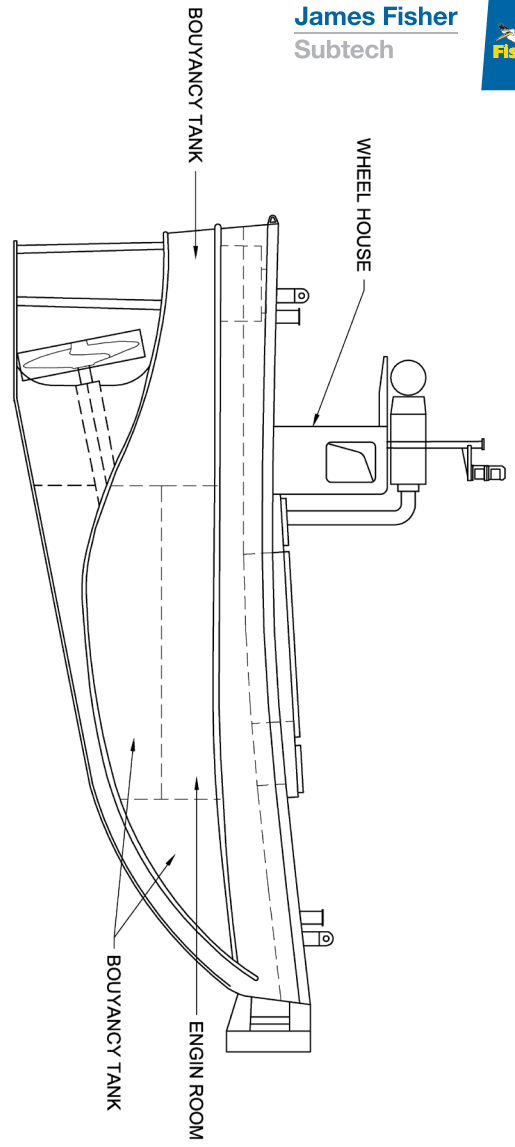


Dimensions and weight

Gross tonnage	24.3 tons
Overall length	11.5m
Breadth	4m
Draught	2m



ELEVATION



PLAN VIEW MAIN DECK

