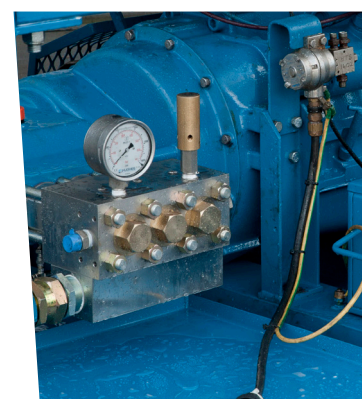




Jetting Pumps WP30



Power Drive Specification	
Engine Type	2003 Iveco 7675 Si
Fuel Type	Diesel
Hydraulic Horsepower	2100
Engine Horsepower	142
Transmission	Direct drive
Fuel Capacity	40 imp gal
Starting System	Air start
Pump	
Pump Type	Hughes HPS 1000
Gear Ratio	4 : 1
Plunger Type	3 x 20 mm OR 3 x 25 mm OR 3 x 35 mm OR 3 x 50 mm
Duty	6.2gpm @ 20300psi; 9.7gpm @ 13050psi; 19.8gpm @ 6525 psi; 38.9gpm @ 3190psi.
Max Pressure	Varies
Max Flow	Varies
Suction Connections	2" BSP
Discharge Connections	1/2" BSP / 3/4" BSP
Suction Required	Positive suction
Dimensions	
Length	2724 mm
Width	1720 mm
Height	1760 mm
Weight	4000 kg
Certification	
	OCMA MEC I Zone II. BS7072



For more information on how Fisher Offshore can add value to your offshore operations visit www.fisheroffshore.com or contact one of our specialist consultants at info@fisheroffshore.com or call +44 (0)1651 87 39 32
Fisher Offshore, North Meadows, Oldmeldrum, Aberdeenshire, Scotland AB51 0GQ

