



Subtech 4512 Spud Barge

Vessel identification

The Subtech 4512 is a Damen Stan pontoon, equipped with a 4-point mooring system and 3 hydraulically driven 18-meter spud poles, she has flexibility to work in a wide range of water depths. With a deckspace exceeding 500m², she can be configured for a wide range of activities.

Type of vessel	Pontoon
Build date	2018
Classification	Bureau Veritas I * hull - pontoon coastal area (max 20nm offshore)
BV registration no.	28297K
Official no.	12215
Flag	Saudi Arabia
Propulsion method	None

Dimensions and weight

Gross tonnage	337 tons
Net tonnage	101 tons
Deadweight	510 tons
Overall length	45m
Breadth	12m
Depth	2.5m
Draught	1.87m

Accommodation

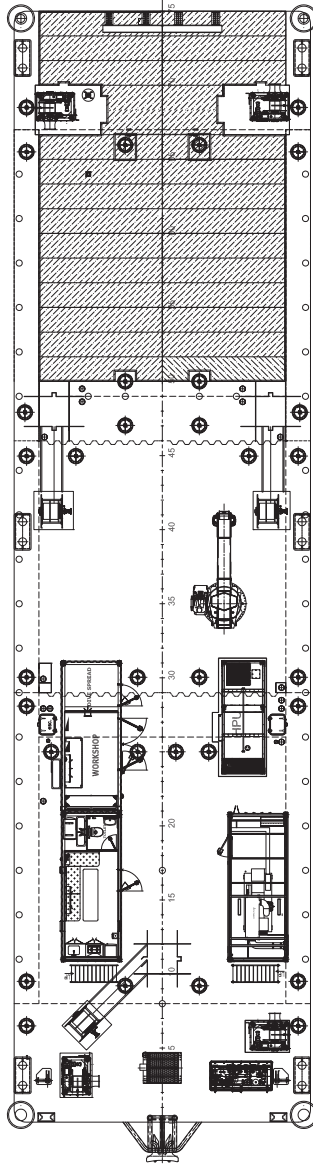
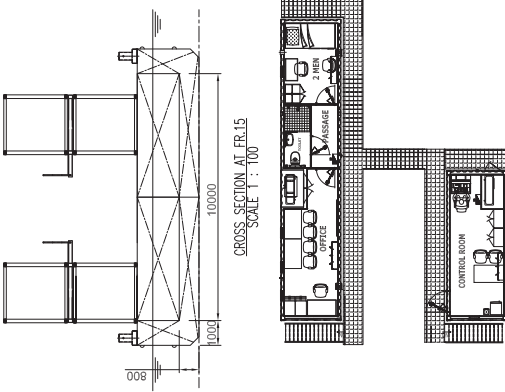
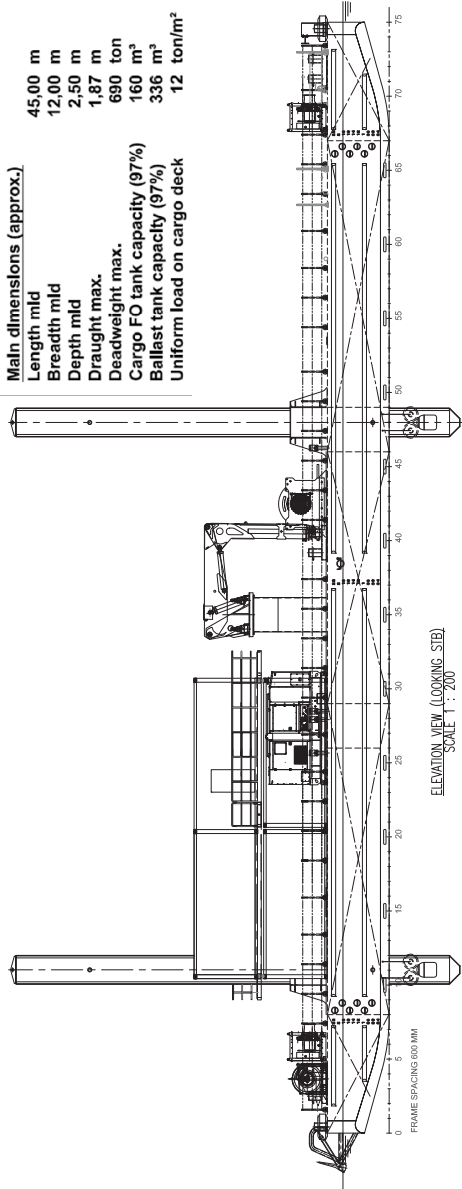
Day accommodation	20ft container system
Office/night accommodation	40ft container system
Workshop	20ft container system

Deck equipment

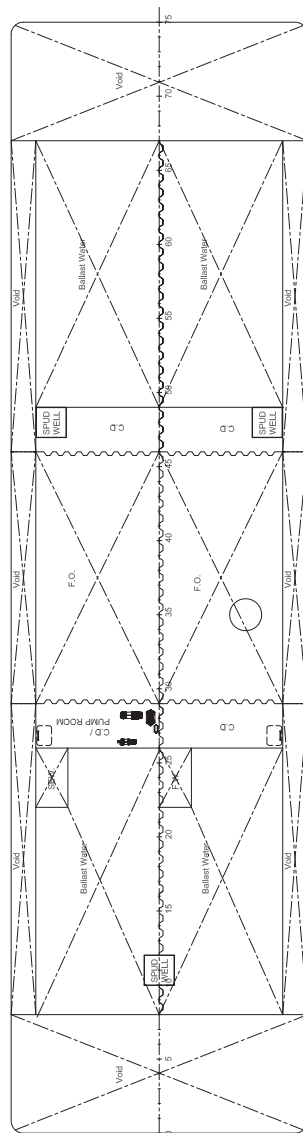
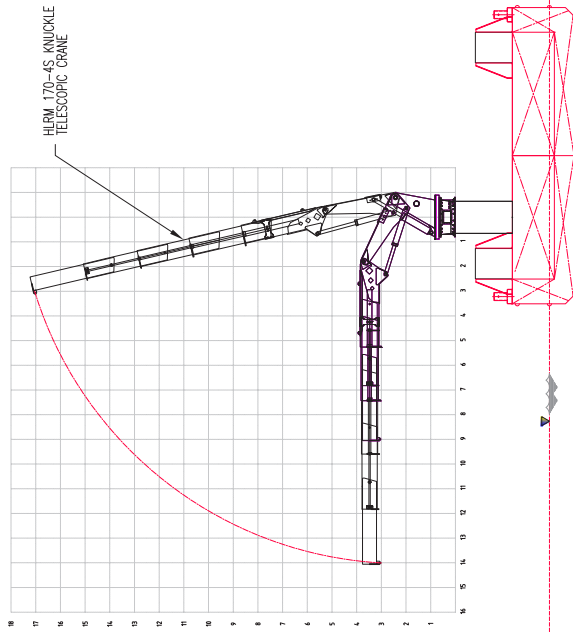
Excavator (optional)	Komatsu PC800
Dredging system (optional)	DOP dredging pump system
Dive spread (optional)	10 ft. dive spread container
Power container	w/ generator set and distribution box
4-point mooring winches (optional)	Hydraulic driven plain mooring winches, locally controlled
Hydraulic power pack (optional)	Diesel driven HPP for DOP pumps and winches
Anchor winch system	Hydraulic driven anchor winch w/launching plate, anchor, chain stopper and chain, locally controlled
Control room	20 ft. control room for remote controlled 4P mooring winches, spud winches, surrounding grating platform
Deck load	12 tons/m ²
Compartments	16 pcs
Ballast tanks	322m ³
F.O.	155m ³



- Main dimensions (approx.)**
- Length mld 45.00 m
 - Breadth mld 12.00 m
 - Depth mld 2.50 m
 - Draught max. 1.87 m
 - Deadweight max. 690 ton
 - Cargo FO tank capacity (97%) 160 m³
 - Ballast tank capacity (97%) 336 m³
 - Uniform load on cargo deck 12 ton/m²



SECOND TIER CONTAINERS
SCALE 1 : 200



CROSS SECTION AT FR.40
SCALE 1 : 200

GENERAL NOTE:

CLIENT:

REV	DATE	DESCRIPTION	DWG	CHK	APP
E	05.09.2022	ISSUED FOR REVIEW AND COMMENT			



James Fisher
Subtech

PROJECT: JF SUBTECH FACILITY DRAWING

TITLE: JF IM4512 GENERAL ARRANGEMENT

SCALE: 1:200

DWG NO. 524205-009-001

SNO/702