



DOP submersible dredge pump

These compact DOP pumps are directly powered by a hydraulic motor, mounted in a protective casing.

A highly efficient, wear-resistant dredge pump with a large spherical passage is at the heart of the DOP pump. It has excellent suction properties and reaches extremely high mixture densities. The DOP pump has been designed for highly abrasive dredging environments.

- Efficient transport of sand / water mixture
- Wear resistant pump parts fit for an abrasive environment
- Compact and robust design
- Easily exchangeable suction heads
- High mixture density due to submersed use
- Complete dredge package delivery including auxiliaries available
- Multiple deployment methods - e.g. excavator or crane

Fit for any dredging job

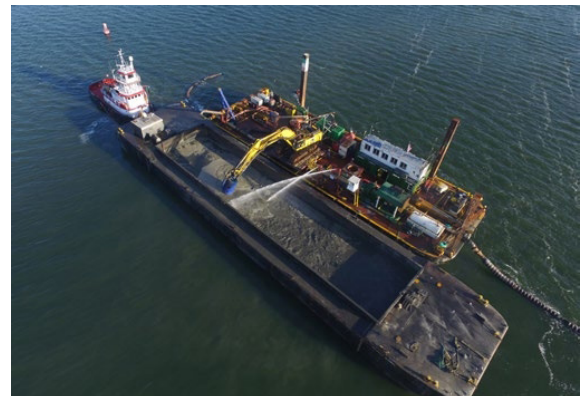
Mining

Environmental dredging

Leveling building pit

Barge unloading

Maintenance dredging



DOP 250 dredge pump

The most efficient way to dredge

Performance

Nominal mixture capacity	1,250 m ³ /hr
Max. total head	5.3 bar
Max. pump speed	900 rpm
Max. power at shaft	195 kW

Hydraulic requirements

Oil flow	483 l/min
Oil pressure at motor*	250 bar

* add for pipeline losses

Jet water

Internal diameter	125 mm
Advised capacity	300 m ³ /hr
Advised pressure	8 bar

Dredge pump dimensions

Suction internal diameter	250 mm
Discharge internal diameter	250 mm
Max. spherical passage	130 mm

Weight

Basic DOP pump unit	2,425 kg
---------------------	----------

Cutter drive

Max. power at shaft	28 kW
Oil flow	75 l/min
Oil pressure at motor*	250 bar

* add for pipeline losses

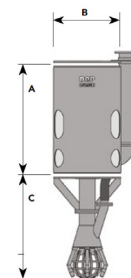
Auger drive

Max. power at shaft	38 kW
Oil flow	100 l/min
Oil pressure at motor*	250 bar

* add for pipeline losses

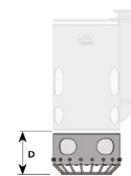
Suction head heights

A (height standard DOP)	1,880 mm
B (diameter standard DOP)	1,215 mm
C (height standard suction head)	1,690 mm
D (height leveller)	730 mm
E (height cutter unit)	1,495 mm
F (height auger head)	1,840 mm
G (length auger)	2,500 mm



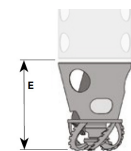
Type-A - Standard

Sand production head to fluidise the bottom material with jet water assistance



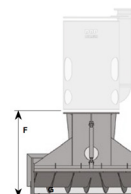
Type-B - Leveller

Flat bottom head to level the surface of the job site using jet water



Type-C - Cutter

Hydraulically driven cutter unit for loosening compacted sand



Type-D - Auger

Hydraulically driven auger head for accurate dredging of polluted sediments

PRODUCTION CURVES

