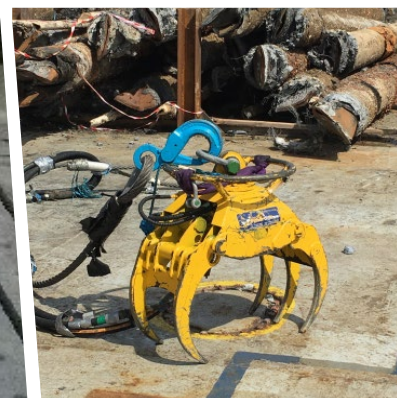
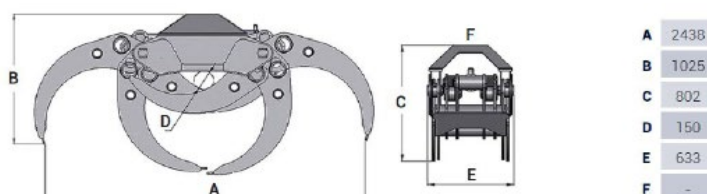




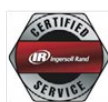
# 20 Tonne Grab



20 Tonne Grab	
Capacity	0.65m <sup>3</sup>
Number of Teeth	2
Tooth Force	25 kN
Pressure	300 bar
Oil Flow	50 ltr/min
Excavator, Weight	20 ton
Weight	820 Kg
Connections	Grab (open and close) BSP
Lifting Interface	Single 25ton shackle
Diver / ROV Interface	Fitted with all round handles and hydraulic brake safety feature



682	0,65	300	90	25	30	10	25	20	30



For more information on how Fisher Offshore can add value to your offshore operations visit [www.fisheroffshore.com](http://www.fisheroffshore.com) or contact one of our specialist consultants at [info@fisheroffshore.com](mailto:info@fisheroffshore.com) or call +44 (0) 1651 87 39 32  
Fisher Offshore, North Meadows, Oldmeldrum, Aberdeenshire, Scotland AB51 0GQ

