



HMF Marine Crane M111 – K2



The HMF Marine Crane comes complete with skid assembly suitable for deck mounting and electric hydraulic power pack.

The fitted winch is capable of lifting 1.0te at max outreach. This Marine Crane is built to provide long time operation against harsh marine environments.

All piston rods are made from Nikrom 350 with stainless steel pipes and fittings as standard. All cranes provided for hire or sale by Fisher Offshore come with a full certification package including an operations and maintenance manual.



HMF Marine Crane M111 – K2	
Hook Capacity	1,250kg up to 4,950kg at min. radius
Winch Lifting Capacity	1,000kg
Max Outreach	8m
Slewing Angle	< 400°
Recommended Pump Capacity	60 l/min
Max Working Pressure	210 bar
Control	Local at Crane
Crane Weight inc. base	2,700kg



For more information on how Fisher Offshore can add value to your offshore operations visit www.fisheroffshore.com

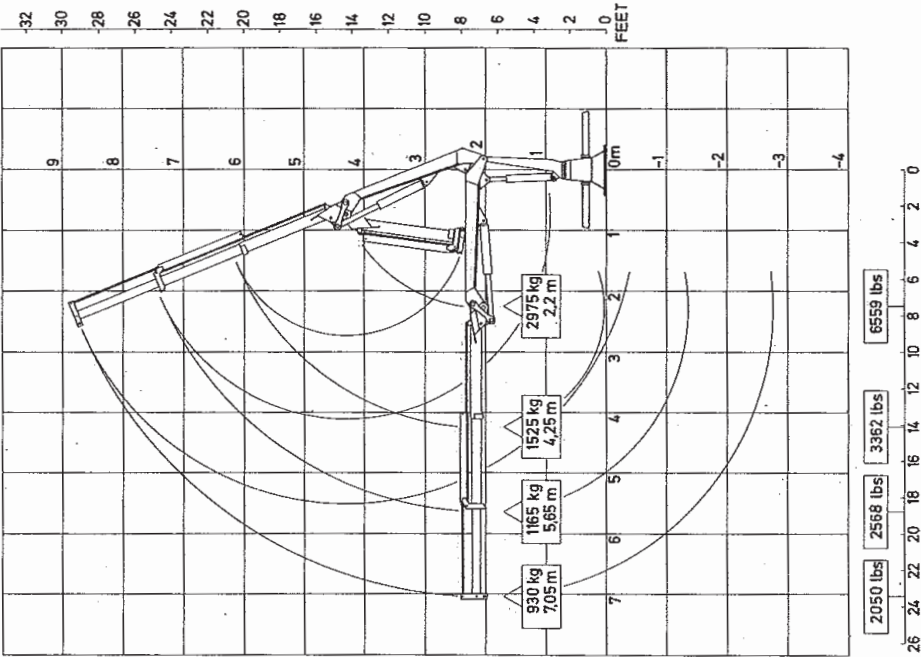
or contact one of our specialist consultants at info@fisheroffshore.com or call +44 (0)1651 87 39 32

Fisher Offshore, North Meadows, Oldmeldrum, Aberdeenshire, Scotland AB51 0GQ



HMF Marine Crane M111 – K2

M68-K2



M68-K1

