



CalMar - Dive Support Daughter Craft

The Dive Support Daughter Craft (DSDC) can be launched from DP2 vessels using a HMD G100 davit LAR system giving a dive support role. As this vessel can be launched from a mother ship and transported overland, this allows for significant cost savings for our clients during mobilisation.

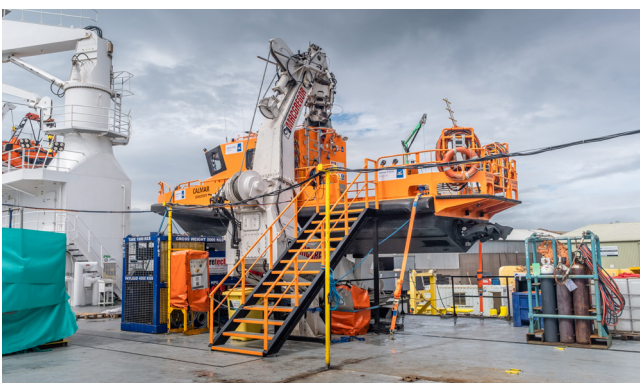
Benefits of DSDC

The DSDC is a perfect option when access to the work area, deck space and installation and accommodation for personnel are an issue. Due to its size the DSDC can also be moored to offshore structures/facilities.

- Can be mobilised to and deployed from any suitable mother vessel or quay
- Support for shallow diving in up to 35 m water depth
- System supports two working divers and one stand-by diver
- High levels of maneuverability
- Equipped with inspection digital recording system

Vessel general information

Name of vessel	CalMar
Year built	2015
Home port	Lowestoft
Vessel type	Alusafe 1150
Length	11.40 m
Beam	3.60 m
Draft	0.70 m
Working area	40 miles offshore
Fuel	Diesel (800 ltr)
Displacement	10,000 kg
Max no. persons	9



Dive system details

Gas storage	The vessel is fitted with 4 x 120 litre composite cylinders for two diver operations, the cylinders are filled with nitrox /air at 200bar.
	The dive system cylinders are exchanged when the vessel returns to the mother ship, with a special gas cassette to switch between air and nitrox to allow for uninterrupted operations.
Gas control	3x diver air panel, 2x diver nitrox panel c/w diver monitoring system.
Data recording	Digitaledge dive/data recording equipment includes two digital recorders with back up facility and a review facility allowing immediate playback and review of data.
Divers' helmets	Diving/Kirby Morgan helmets and BandMasks as required.
Divers' umbilicals	Main gas, pneumo, communications, video, light and pressure transducer.
Diver recovery	Man-riding emergency recovery davit and winch (rated for 205 kg) with jason cradle.



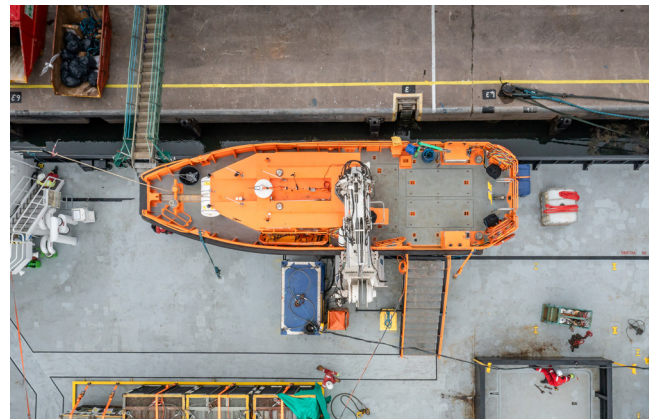
Fast rescue daughter craft

The hull is manufactured from marine aluminium and is of a fully planning type with a deep V-bottom construction, suitable for high speeds. The superstructure is also made in marine aluminium construction.

Safety	The strength of the hull and superstructure is sufficient to withstand all normal forces encountered under normal use offshore at maximum boat speed.
---------------	---

Launch and recovery system

Modular	The concept of the shallow dive vessel package is that it is modular, easy and quick to install. The launch davit is mounted on custom-built skids that are designed to be fitted directly to any mother vessel. The operation of the davit is via the control console which contains the hydraulic control valves.
G100 Davit	This system is self-contained with primary and secondary hydraulic supplies. The craft sits tightly in the docking cradle until ready to launch.



Fitted dive system complies with all requirements outlined in IMCA DO40.

