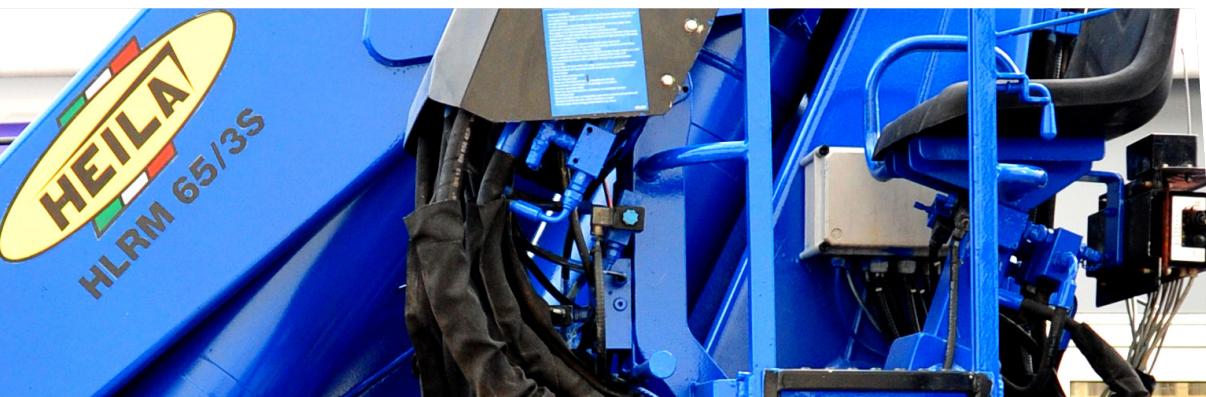




HLRM 65-3S Marine Crane



The HLRM 65-3S + Jib 2S Marine Crane + remote control come complete with skid assembly suitable for deck mounting and 55Kw electric hydraulic power pack.

The fitted winch is capable of lifting 4te at all angles. This Marine Crane is built to provide long time

operation against harsh marine environments. All piston rods are made from Nikrom 350 with stainless steel pipes and fittings as standard. All cranes provided for hire or sale by Fisher Offshore come with a full certification package including an operations and maintenance manual.

HLRM 65-3S Marine Crane	
Hook Capacity	5,400kg up to 22,000kg at min. radius
Winch Lifting Capacity	3,500kg
Max outreach	10.5m and 17m with jib extension
Slewing Angle (Continuous)	360°
Recommended Pump Capacity	90 lt/min
Max Working Pressure	280 bar
Control	Mounted Operator Station
Crane Weight inc. base	12,000 kg



For more information on how Fisher Offshore can add value to your offshore operations visit www.fisheroffshore.com

or contact one of our specialist consultants at info@fisheroffshore.com or call +44 (0)1651 87 39 32

Fisher Offshore, North Meadows, Oldmeldrum, Aberdeenshire, Scotland AB51 0GQ

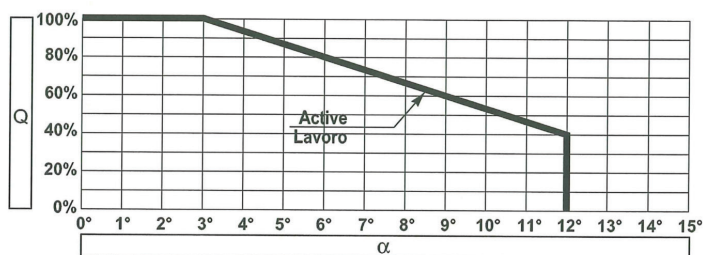
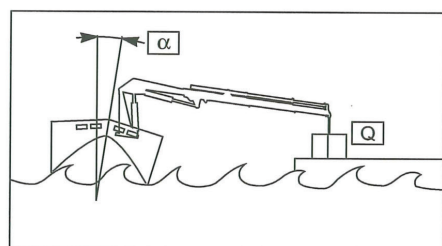
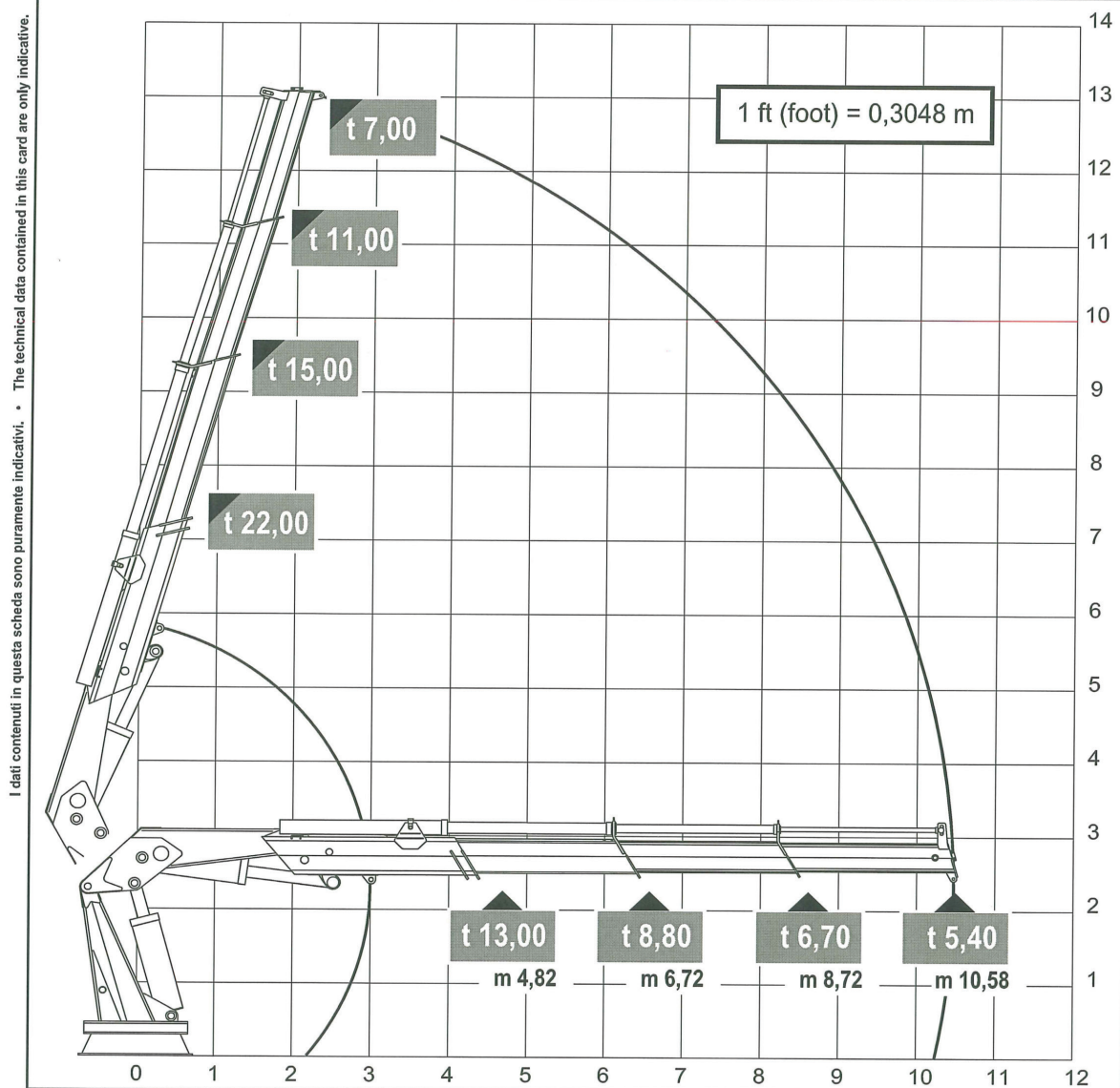


HLRM 65-3S Marine Crane

WORKING DIAGRAM DIAGRAMMA DI LAVORO

HLRM 65-3S

(ONLY FOR USE WITH HOOK - SEA STATE - 0 - OR HARBOUR CONDITION)



For more information on how Fisher Offshore can add value to your offshore operations visit www.fisheroffshore.com

or contact one of our specialist consultants at info@fisheroffshore.com or call +44 (0)1651 87 39 32

Fisher Offshore, North Meadows, Oldmeldrum, Aberdeenshire, Scotland AB51 0GQ