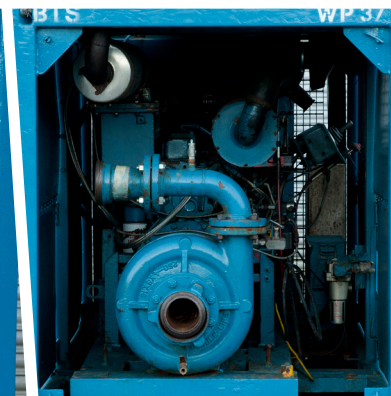
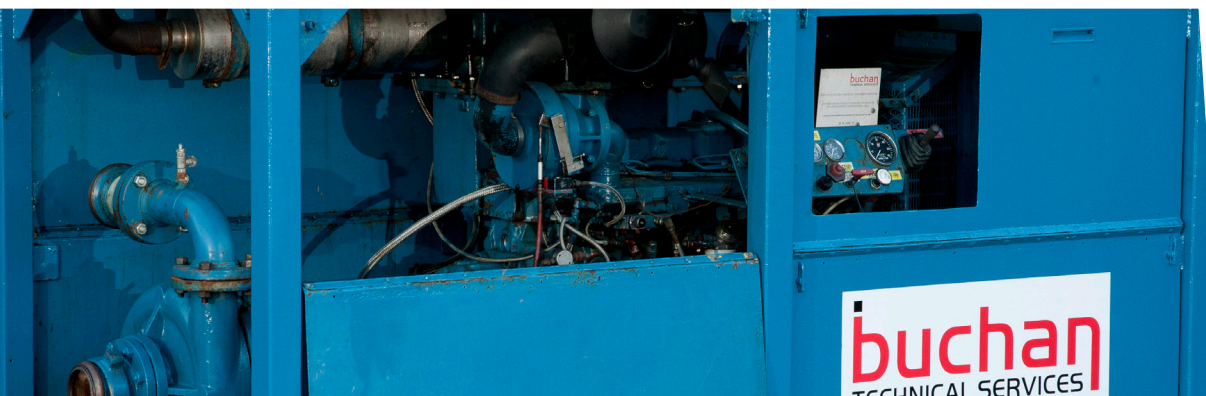


Centrifugal Pump

WP37



Power Drive Specification	
Engine Type	Zone II Iveco 7675 i
Fuel Type	Diesel
Max RPM	2000
Engine Horsepower	100
Clutch Type	Direct drive
Fuel Capacity	40 Imp Gal
Starting System	Air Start
Pump	
Pump Type	4" x 3" x 13" single stage
Duty	N/A
Max Pressure	8.5 bar
Max Flow	2.5m³/min
Suction Connections	4" 150 / 4" Weco
Discharge Connections	3" 150 / 4" Weco
Suction Required	Free flooding
Controls	Externally mounted c/w all controls and gauges
Shut Down System	Oil operated - stop, emergency stop, overspeed, high water temp, high exhaust temp, low oil pressure, fuel shut off.
Dimensions	
Length	2700 mm
Width	1300 mm
Height	1590 mm
Weight	2800kg
Certification	
	OCMA MEC I ZONE II; SI 1998 No 2307. BS7072

