

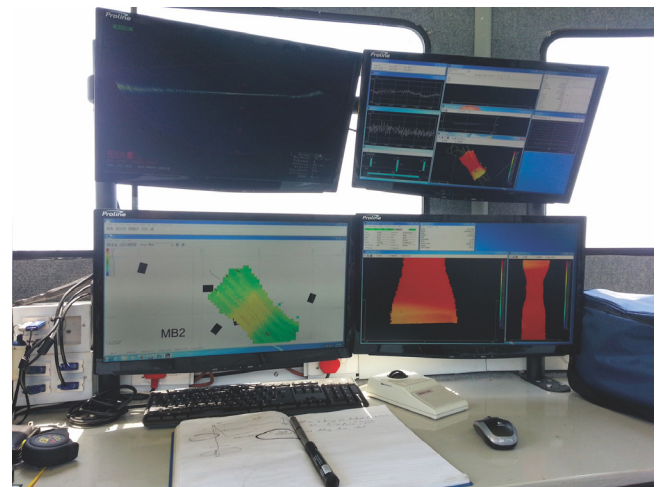


Odin survey vessel

Vessel identification

The Odin is a highly manoeuvrable, road transportable specialized survey vessel that can be quickly deployed via road to anywhere in Southern Africa. She is designed such that she can be containerized and shipped to any location in the world too.

Type of vessel	8m semi rigid
License	INAMAR
Fuel capacity	100 litres
Engines	2 x 70hp Yamaha 4 stroke outboards
Speed	18 knots
Range	Approx. 25 NM



Survey equipment

- Norbit system
- Trimble TDL 450L radio
- Pure sinewave 220v inverter
- Generator / shore power input
- 2-screen survey station

